

CD3 Recombinant antibody

Cat: B03008R

Company: HaokeBIO

Uniprot ID: P07766

Applications: IHC/IF: 1:5000-1:20000

Organism: Rabbit

WB: 1:5000-1:50000

Species reactivity: Human Mouse Rat

Background:

CD3 is a complex of proteins that directly associates with the T cell receptor (TCR). The TCR/CD3 complex of T-lymphocytes consists of either a TCR alpha/beta or TCR gamma/delta heterodimer coexpressed at the cell surface with the invariant subunits of CD3 labeled gamma, delta, epsilon, zeta, and eta. The TCR recognizes antigens bound to major histocompatibility complex (MHC) molecules. TCR-mediated peptide-MHC recognition is transmitted to the CD3 complex, leading to the intracellular signal transduction. CD3 is considered to be a pan-T cell marker for detection of normal and neoplastic T cells. This antibody is directed against the epsilon chain of human CD3 molecule.

Protein full name:

CD3e molecule, epsilon

Synonyms:

CD3E, T-cell surface antigen T3/Leu-4 epsilon chain, T3E, CD3-epsilon, CD3 epsilon

Immunogen:

Recombinant protein

Isotype:

IgG

Subcellular location:

Cytoplasm, Membrane

Purity:

Affinity purification

Form:

Liquid

Storage Buffer:

PBS with 0.02% sodium azide, 100 µg/ml BSA and 50% glycerol.

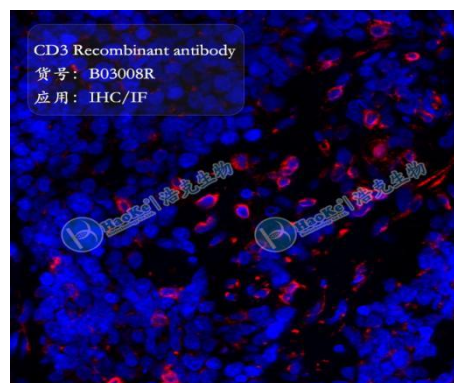
Storage:

Store at -20 °C for one year.

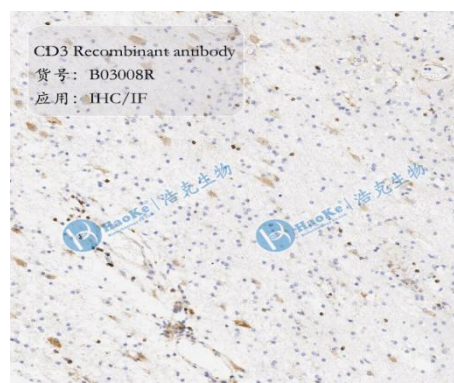
Experimental procedure:

Antigen retrieval: Citrate buffer (pH 6.0), Medium high heat for 8 minutes, stop for 7 minutes, medium high heat for 8 minutes. Incubate antibody, 4°C overnight. Secondary antibody: Poly-HRP Goat Anti-Rabbit & Mouse Universal Secondary Antibody, RT, 1h.

Images:



Sample: Mouse tumors, 4% PFA 12-24h.



Sample: Mouse tumors, 4% PFA 12-24h.